

DWG.NO. HW1382072

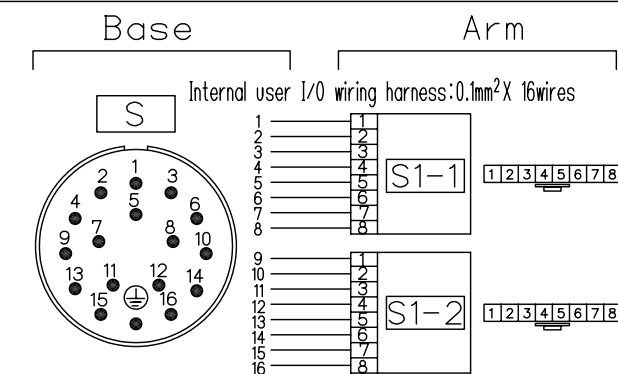
This drawing is applicable with following type

Type	Note
YR-SIA020D-A11	Drip proof specification with water proof flange.・DX100
YR-SIA020F-A11	Drip proof specification with water proof flange.・FS100

The drip-proof specification has a hole on its wrist flange to pass cables as with the standard specification. When mounting equipment such as attachment, perform drip-proof treatment on the flange surface.

The optional waterproof wrist flange is available.

<NOTE> The connectors for internal user I/O wiring harness are not drip-proofed; depending on the ambient conditions, perform drip-proof treatment after connecting the wiring harness. (E.g., treating the connections with water-proof tape, or connecting the wiring harness inside the drip-proof box.)



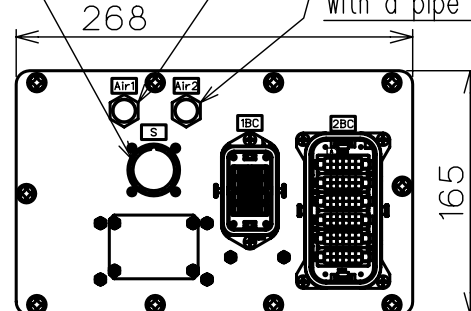
### Connectors for Internal user I/O wiring harness

Connector for internal user I/O wiring harness S:

JL05-2A20-29PC (Pin connector with a cap)

Prepare socket connector: JL05-6A20-29SC

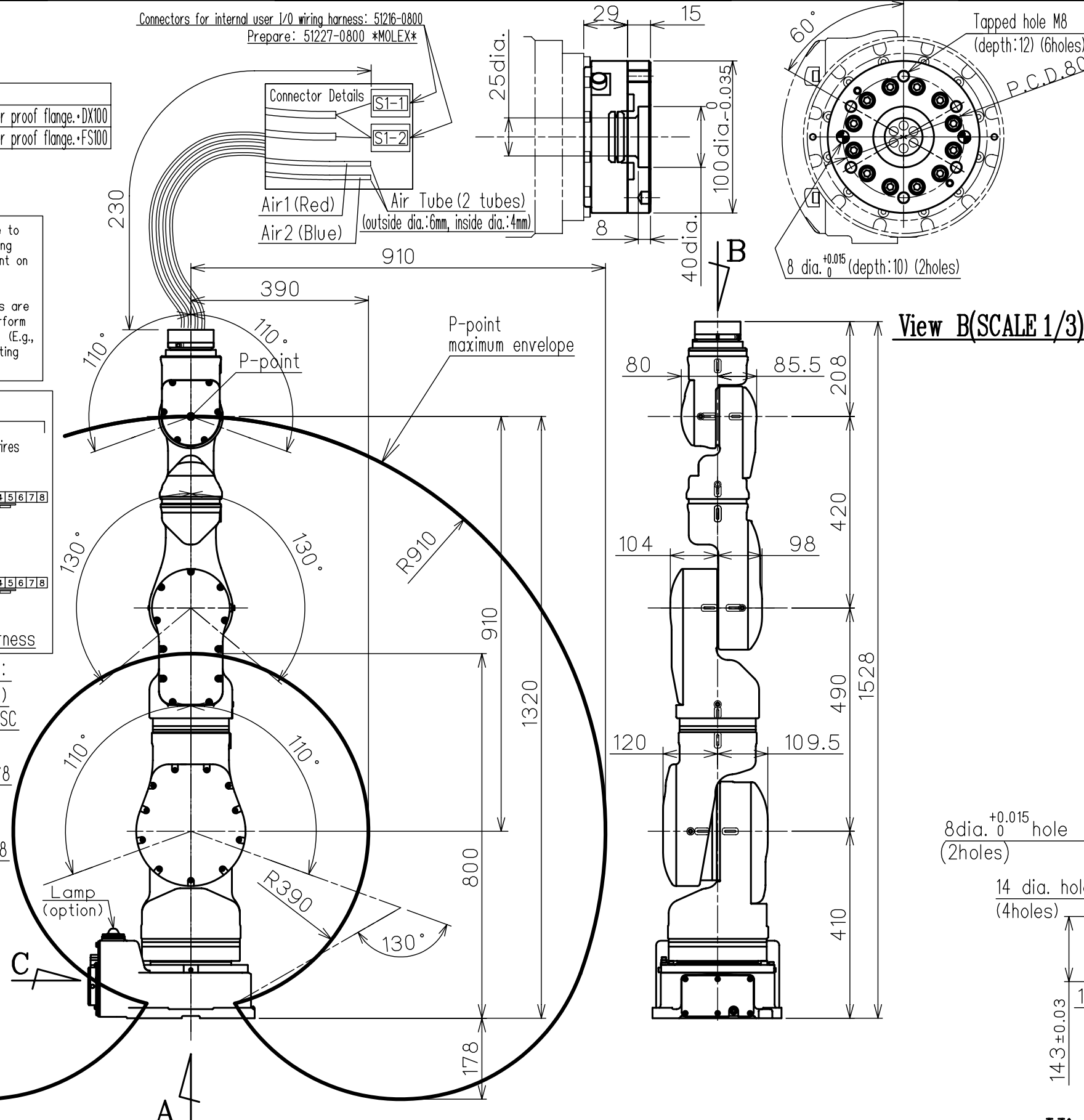
Air inlet: Air1  
Tapped hole PT3/8  
with a pipe plug  
Air inlet: Air2  
Tapped hole PT3/8  
with a pipe plug



View C(SCALE 1/5)

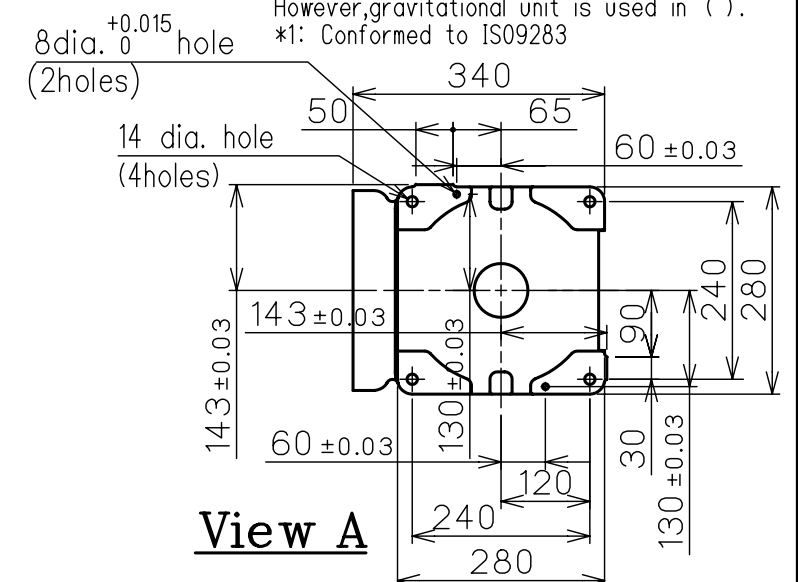
FOR STUDY PURPOSE ONLY

Connectors for internal user I/O wiring harness: 51216-0800  
Prepare: 51227-0800 \*MOLEX\*



Model		MOTOMAN-SIA20D,SIA20F
Item		
Configuration		Vertically Articulated
Degree of Freedom		7 axes
Payload		20kg
Repetitive Positioning Accuracy*1		±0.1mm
Range of Motion	S-axis	-180° - +180°
	L-axis	-110° - +110°
	E-axis	-170° - +170°
	U-axis	-130° - +130°
	R-axis	-180° - +180°
	B-axis	-110° - +110°
	T-axis	-180° - +180°
Maximum Speed	S-axis	2.27rad/s (130° /s)
	L-axis	2.27rad/s (130° /s)
	E-axis	2.97rad/s (170° /s)
	U-axis	2.97rad/s (170° /s)
	R-axis	3.49rad/s (200° /s)
	B-axis	3.49rad/s (200° /s)
	T-axis	6.98rad/s (400° /s)
Allowable Moment	R-axis	58.8N・m (6kgf・m)
	B-axis	58.8N・m (6kgf・m)
	T-axis	29.4N・m (3kgf・m)
Allowable Inertia (GD <sup>2</sup> /4)	R-axis	4.0kg・m <sup>2</sup>
	B-axis	4.0kg・m <sup>2</sup>
	T-axis	2.0kg・m <sup>2</sup>
Mass		120kg
Ambient Conditions	Temperature	0 to 40°C
	Humidity	20 to 80%RH at constant temperature
	Vibration acceleration	4.9m/s <sup>2</sup> (0.5G) or less
	Others	<ul style="list-style-type: none"> <li>•Free from corrosive gas or liquid, or explosive gas</li> <li>•Free from exposure to water,oil,or dust</li> <li>•Free from excessive electrical noise (plasma)</li> </ul>
Power Capacity	DX100	2.0 kVA
	FS100	1.5 kVA

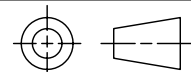
SI units are used in this table.  
However, gravitational unit is used in ( ).  
\*1: Conformed to ISO9283



View A

Note:

1. All rights reserved.
2. Please note that the data is subject to be deleted without advance notice.
3. No warranty is given in relation to the data including the specification.
4. We are not responsible for any damages or loss caused by the use of the data.



SCALE 1 : 10



株式会社 安川電機

Reference Drawing

TITLE MOTOMAN-SIA20D,SIA20F  
DIMENSION DIAGRAM

DWG.NO.

HW1382072

S I Z E	A 3
---------	-----